

## Band sets 'Choral Afternoon'

The Compton Heights Concert Band will join with a chorus of more than 100 voices in "A Choral Afternoon" March 1 at Third Baptist Church, 620 N. Grand Blvd.

The concert begins at 3 p.m. and is the second in the "Band On Grand" series, presented by the Compton Heights Concert Band and Grand Center.

"A Choral Afternoon" features the voices of more than 100 singers from some of St. Louis' finest choirs: All Saints Episcopal Church, St. Paul A.M.E. Church, Third Baptist Church, the West Side Baptist Church and the Sumner High School Choir.

The band and chorus will perform two selections from St. Louisan Robert Ray's "Gospel Mass" — the Gloria and the Credo. Noted gospel singer and South Sider Sylvia Ray will perform the alto solo in the piece.

Other selections include "Old Hundredth Psalm Tune," Beethoven's "Egmont Overture," Percy Grainger's "Country Garden," Leroy Anderson's "Jazz Pizzicato" and others.

Tickets are \$12 for adults and \$7 for seniors older than 60 and children under 13. A special two-concert ticket for \$20 covers "A Choral Afternoon" and the third concert in the series, "A Salute To St. Louis Sports," on April 5, with free parking as well. For group rates, call Jan at 533-1884.

## Band scheduled for 'A Choral Afternoon'

The Compton Heights Concert Band will join with a chorus of more than 100 voices in "A Choral Afternoon" March 1 at Third Baptist Church, 620 N. Grand Blvd.

The concert begins at 3 p.m. and is the second in the "Band On Grand" series, presented by the Compton Heights Concert Band and Grand Center.

"A Choral Afternoon" features the voices of more than 100 singers from some of St. Louis' finest choirs: All Saints Episcopal Church, St. Paul A.M.E. Church, Third Baptist Church, the West Side Baptist Church and the Sumner High School Choir.

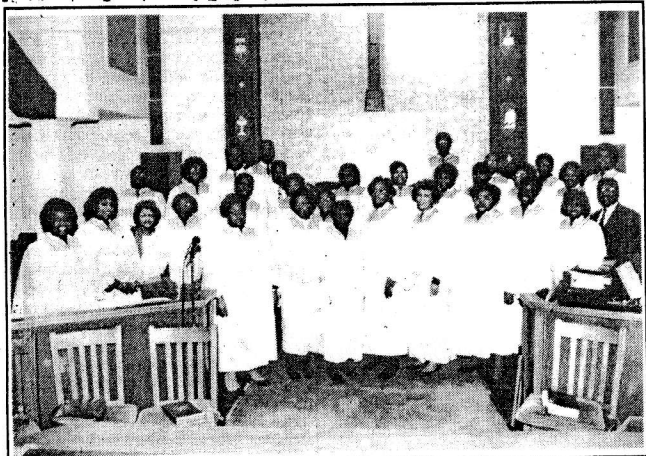
The band and chorus will perform two selections from St. Louisan Robert Ray's "Gospel Mass" — the Gloria and the Credo. Noted gospel singer and South Sider Sylvia Ray will perform the alto solo in the piece.

Other selections include "Old Hundredth Psalm Tune," Beethoven's "Egmont Overture," Percy Grainger's "Country Garden," Leroy Anderson's "Jazz Pizzicato" and others.

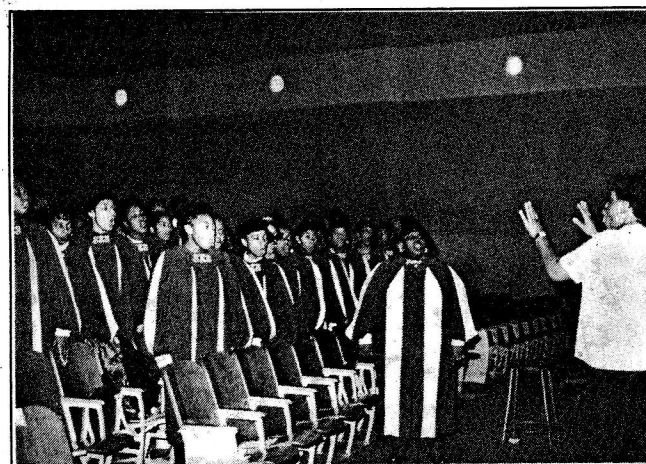
Tickets are \$12 for adults and \$7 for seniors older than 60 and children under 13. A special two-concert ticket for \$20 covers "A Choral Afternoon" and the third concert in the series, "A Salute To St. Louis Sports," on April 5, with free parking as well. For group rates, call Jan at 533-1884.

The St. Louis American

Feb. 27 - Mar. 4, 1992



St. Paul AME Church Choir and director, Mark Brooks

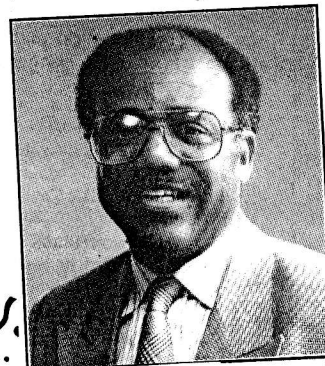


Summer High School Choir and director, Delores Greathouse

GOSPEL  
EXTRAVAGANZA



Sylvia V. Ray



Robert Ray

The "Band on Grand" Series will feature "A Choral Afternoon" at 3 p.m. Sunday, March 1 at Third Baptist Church, 620 N. Grand. The event will feature St. Louisan Robert Ray's "Gospel Mass." Tickets are \$12, adults; \$7, seniors and children. Call 533-1884 for more information.



All Saint's Episcopal Church Choir and director, Acquilla Tinglin



West Side Baptist Church Choir and director, Robert Ray.